



## DADO PLANE

### INTRODUCTION

Your Dado Plane is designed to plane a dado (trench) at a certain width across the grain, in order to house a piece of wood when creating a furniture carcass. It can also plane trenches along the grain. It is designed to be used in conjunction with a simple guide, positioned so as to align the Dado plane with the intended trench. The Dado plane features a nicker, which neatly severs the grain when used across the grain. An adjustable depth stop is also incorporated to accurately stop the plane from cutting at a set depth.

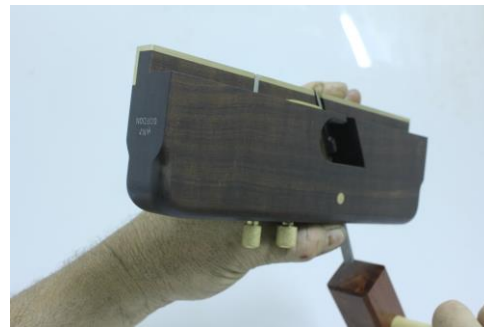
### SETUP

*To set up the blade, follow these simple steps:*

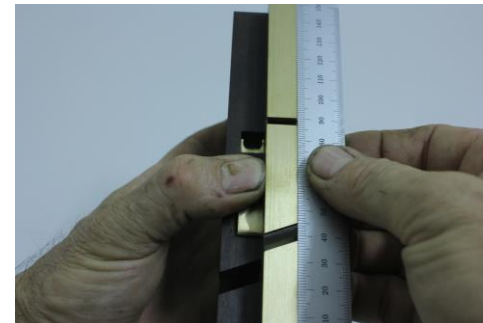
- Insert the blade and place the plane on the flat setting block provided.



- Ensure the blade is protruding slightly from the left hand side of the plane body.
- Put the wedge into position and tap it so the blade is held in position.
- Turn the plane over and sight down the sole.



- Tap the top of the blade if a deeper cut is required, or tap the heel (back) of the plane for lighter cut.



- Using a small ruler, check the alignment of the nicker and the edge of the blade. Tap the blade one way or the other if required.



- To remove the blade, simply tap the brass abutment in front of the blade, the wedge will loosen so you can remove the blade from the bottom of the plane.



### USING YOUR DADO PLANE

*There are many ways to use a Dado plane, here are some options:*

Mark out the position of your dado's. Then, using a large home made wooden square, place it in the position of the dado.



***Continued on back***

Hold down the square with one hand and use the plane with the other. **(A)**

If required, use a clamp to hold the square and use both hands to plane. **(B)**

Ensure the nicker is protruding so as to score the wood fibres across the grain and the depth stop is set to the desired position.



The blade depth of cut should be set so the wood is removed quickly but also ensuring the plane isn't difficult to push, otherwise the accuracy of the dado will be lost.

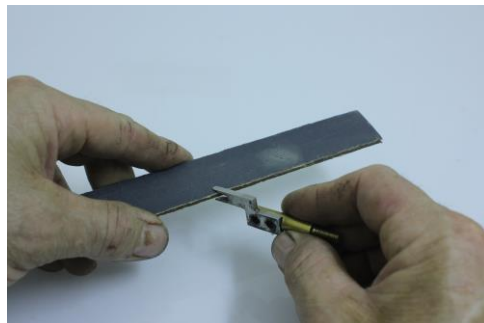
Keep planing until the plane stops cutting due to the adjustable depth stop coming into contact with the wood.



## SHARPENING

### **Cutting Blade:**

When sharpening the cutting blade ensure you maintain the correct skew angle. When the blade is in position in the plane, sight down the sole and you should see an even amount of blade across the sole. If the blade is high on one side, then hone that side slightly more during the sharpening process, until the blade is even across the sole. In all other respects, sharpen this blade the same as other blades.



### **Nicker Blade:**

**CAUTION – Never sharpen the outside face of the nicker.**

To sharpen the nicker, remove it from the plane simply by advancing the blade with the adjuster knob until the thread disengages. You can then pull the nicker from the body of the plane. Using a thin piece of wood, glue some 600 and 1200 grit wet and dry abrasive on either side of the wood. Rub the inside faces of the nicker on the 600 grit and remove the wear facets whilst maintaining the basic shape. Then polish the inside faces with the 1200 grit side. The outside faces of the nicker are already polished, you must not hone these faces or you will lose the plane's ability to cut the desired sized dado.

Once the nicker is sharp, put it back into the plane body by pushing on the flat step adjacent to the nicker blades, while turning the adjuster knob anti-clockwise.

**CAUTION – Do not push on the nicker blade when inserting it, as you will cut yourself.**

## DADO CARE AND MAINTENANCE

- Keep a smear of oil on your blade when not in use to prevent rust.
- Apply a tung oil base product on the wooden body to keep it looking good.
- The threads in the adjusters have been greased and should not require any maintenance. But if you have removed the nicker or depth stop, ensure no dust or dirt gets into the mechanism.
- Once a year, check that the sole of the plane is flat by retracting both the blade and nicker. Rub the sole on a flat surface that has some new 150 grit abrasive paper on it. Rub only until flat.

### **More information at:**

**H.N.T Gordon & Co Classic Plane Makers Australia**

www.hntgordon.com.au

email: planemaker@hntgordon.com.au

PO Box 92, Alstonville NSW 2477

Ph: 61 (02) 6628 7222

Fax: 61 (02) 66287522